

# Mind in West Essex - Organogram

## Board of Trustees

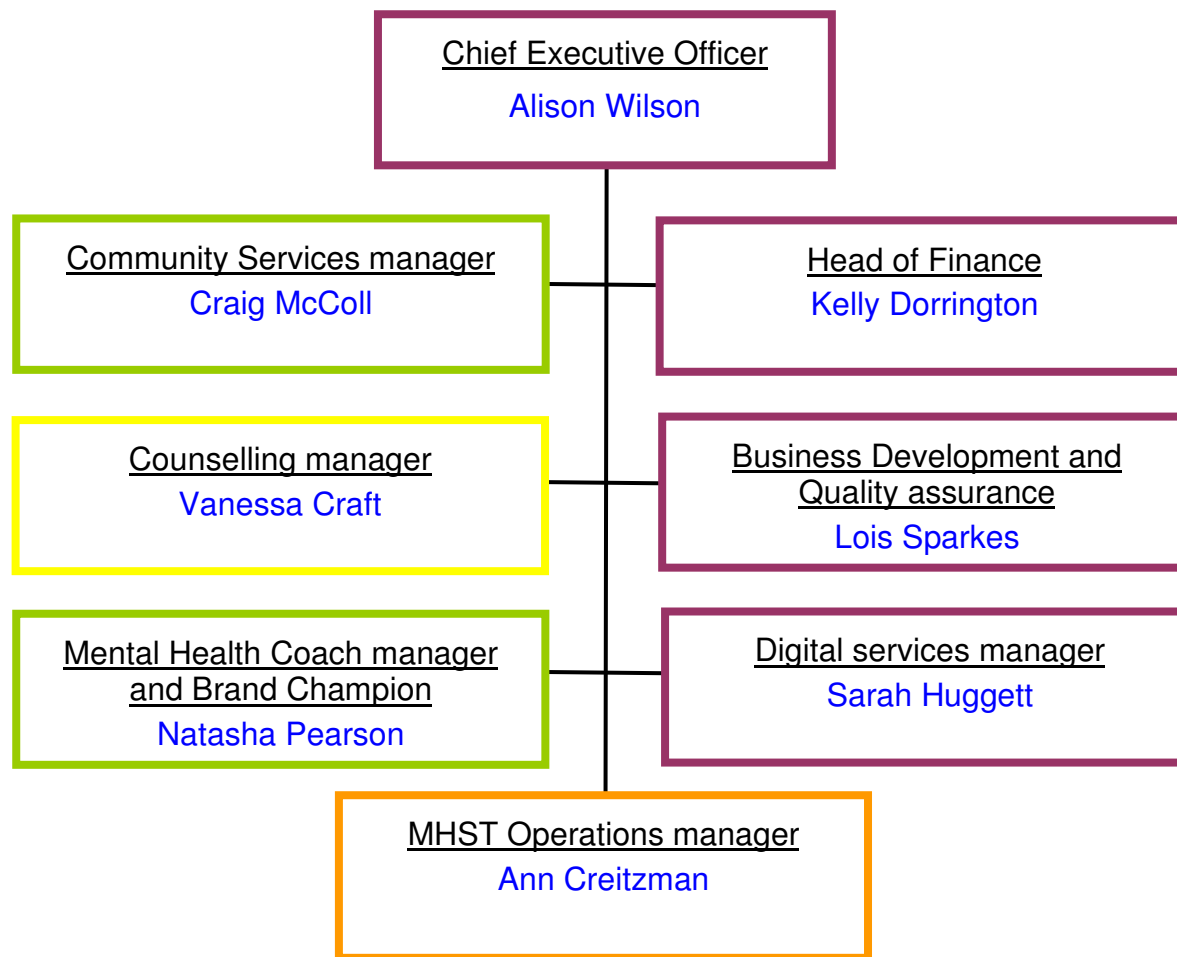
### Board of Trustees

Chairman - [Richard Crone](#)  
 Vice Chair - [Robin Strube](#)  
 Trustee - [Alan Wellbelove](#)  
 Trustee - [Anja De Vos](#)  
 Trustee - [Barbara Brafman-Price](#)  
 Trustee - [Gary Hyams](#)  
 Trustee - [Jackie Anslow](#)  
 Trustee - [Robbie Freeman](#)  
 Trustee - [Sylvia Hayes](#)  
 Trustee -

### Service Key

- Cross service staff
- Community Services
- Counselling
- MHST in schools
- Crisis Alternatives
- Training
- Other services

## Leadership team



<u>Staff</u>	<u>Non Staff professionals</u>	<u>Volunteers</u>	<u>Counselling</u>
98 staff deliver the Associations services	Data support - Mark Prangell Auditors & Financial support - Edmund Carr	125 volunteers work in a variety of roles to support our activities.	30 qualified, self-employed Counsellors deliver the service.

## Management areas of responsibility

<b>Craig McColl</b> 	Sanctuary and Night Owls Peer Support Community Engagement Creative Minds Volunteers Let's Talk Essex
<b>Lois Sparkes</b> 	New Business Training Content Development Suicide prevention Equity and Diversity Safeguarding & Tell us (Safeguarding) Health and Safety Information Governance MQM
<b>Sarah Hugget</b> 	Websites Digital groups Supported Self Help Academy WE Digital Inclusion Lamplight Data Federation Relationships
<b>Ann Creiztman</b> 	Mental health support teams in Harlow, Epping & Uttlesford. Trauma lead (advisory)
<b>Kelly Dorrington</b> 	Finance Fundraising Training Our Buildings
<b>Natasha Pearson</b> 	PCN Coaches NHS Talking Therapies Coaches Brand Champion Wellbeing Assistants Men's Mental Health project
<b>Vanessa Craft</b> 	Counselling – fee paying. Student Counselling NHS Talking Therapies Tell Us
<b>Alison Wilson</b> 	All of the above Plus Our People Tell Us Voluntary sector representation External Relationships Lived Experience Business Risk Essex Alliance

# Line management structure

